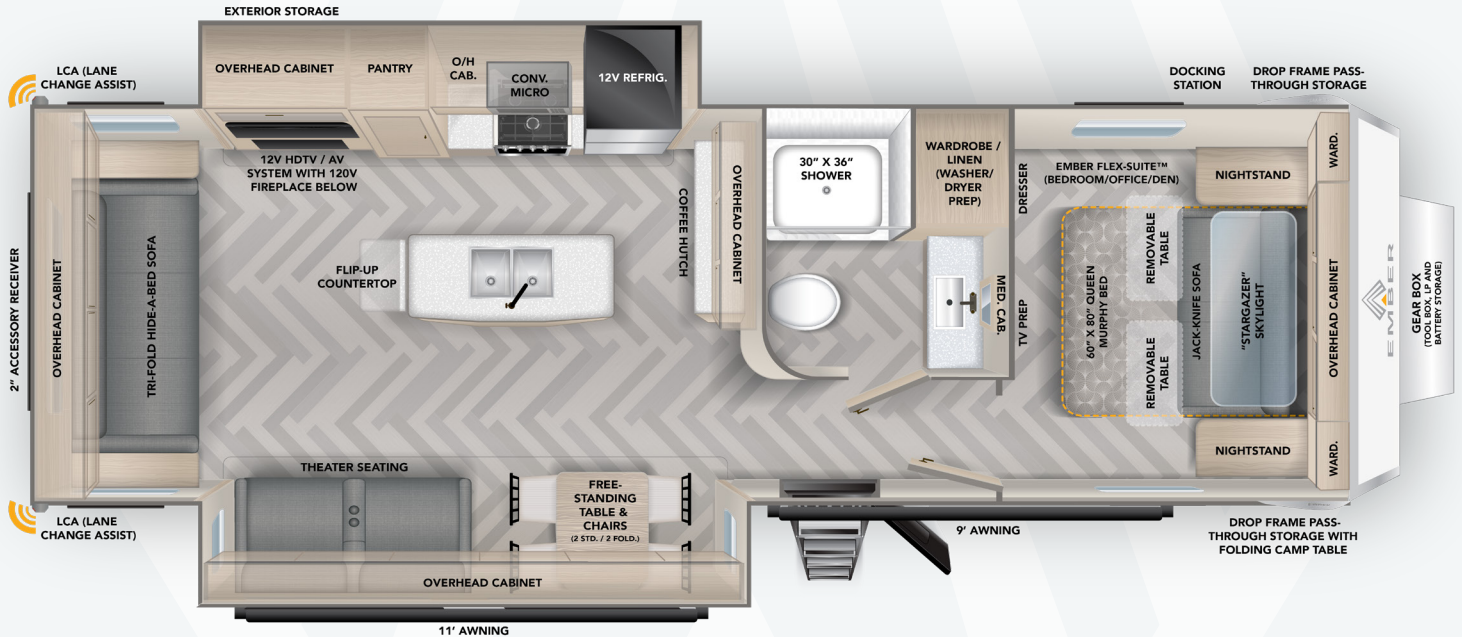


29MRS



## SPECIFICATIONS

29MRS

LENGTH

35'10"

HEIGHT

11'8"

DRY WEIGHT

8,120 LBS

HITCH WEIGHT

1,025 LBS

## KEY FEATURES

- Evermore™ Composite Azdel® Floor
- 16" Goodyear Endurance® Tires with TPMS
- Ember-exclusive CUB Lane Change Assist (LCA) Safety Feature
- Flex-Suite™ with Walk-around Residential Queen Size 60" x 80" Murphy Bed with Sofa Below and Removable Tables
- "Stargazer" Skylight
- Dual-Pane Acrylic Caravan Windows with Integrated Thermal Shades/Screens
- Drop Frame Chassis with >50 cu. ft. of Pass-Through Storage (with Folding Camp Table)
- EmberLink™ "Smart RV" system controls Slide Room, Awning, and Lighting
- Standard Theater Seating and Free-Standing Table and Chairs (2 standard/2 folding)
- 55 gal. Fresh, Dual 35 gal. Gray (70 gal. total), and 35 gal Black Tanks
- Aluminum Gear Box with Dual 20LB LP Tanks, Battery Hookup & Storage
- Optional Off-grid Solar Package with (2) 200W Rooftop Panels (400W total), 2000W Inverter, and Victron® MPPT Solar Controller
- Sleeps 2-4

## STANDARDS

### Construction

- 5-Sided Aluminum Frame Construction
- Gel-coated Fiberglass Exterior
- Laminated Azdel Onboard® Composite Side, Rear, Front, and Slide Room End Walls (inner and outer substrates)
- Evermore™ Laminated Azdel Onboard® Composite Floor
- One-piece PVC Roof (Lifetime Warranty)
- Drop-Frame Next Gen HSLA Chassis
- VersaCoupler® Height Adjustable Bolt-On Hitching System with LED Light
- Dexter® Torsion Axles with Self-Adjusting Electric Brakes
- Aluminum Bed, Bunk, and/or Dinette Construction (where applicable)

### Exterior

- Dual-Pane Acrylic Caravan Windows with Integrated Thermal Shades/Screens
- Nitro-filled 16" Goodyear Endurance® Tires - Load Range E (including spare)
- Custom Aluminum Rims (including spare)
- Tire Pressure Monitoring System (TPMS)
- Fully-Adjustable Solid Step™ Stairs (at main entrance)
- Dual-ducted Whisper Quiet 15K BTU Soft-Start Roof A/C
- Electric Awning with Dimmable LED Light
- Front Electric Tongue Jack with LED Light
- Front and Rear Quick Drop™ Stabilizers
- Pre-wired for Rear/Side Cameras
- High-Visibility LED Exterior Lighting
- Back-Up Lighting
- Fully-Enclosed Radiant Barrier Underbelly
- XL Fresh Water Tank (55 gallons)
- 12V Tank Heaters
- Dual 20# LP Tanks (40# total capacity)
- LP Quick Connect
- 30 Amp Service (50 Amp 28BH/28MBH, 29RS/29MRS) / 55 Amp Converter
- Detachable Shore Power Cord
- Battery Disconnect
- Starlink cable prep

- Universal Docking Station with Outside Shower and Water Heater Bypass
- Black Tank Flush
- 30" Tempered Glass, Friction Hinge Entrance Door with Thinshade™ Window Shade and Screen Shot™ Screen Door
- Frame-Integrated Rear 2" Accessory Receiver (300# capacity)
- Repositionable/Telescoping Roof Ladder + Rear-Mounted Bracket
- Side and Rooftop Solar Ports
- Winegard Air 360+ Omnidirectional Antenna (Wi-Fi/LTE Prep)
- Keyed-Alike™ Locking System
- 360 Siphon® Cap on Black Tank Vent

### Interior

- "Stargazer" Dual-Pane Acrylic Skylight with Integrated Thermal Shades/Screens
- 60" x 80" Residential-Sized Queen Bed with USB + 120V Power Access and LED Lighting on Each Side
- EmberLink™ Smart RV Control System
- 12V LED HDTV w/ Built-In Bluetooth AV System
- Hardwood Framed Cabinet Doors with Self Close Hidden Hinges
- Hardwood Framed Drawer Fronts with Soft Close Drawers
- 12V Refrigerator (10 cu. ft.)
- Convection Microwave/Air Fryer
- 12V Powered Ceiling Vent
- Seamless Countertops
- Stainless Steel Kitchen Sink
- Three-burner Cooktop
- 21" Oven with Pots and Pans Drawer
- Dimmable Interior/Exterior LED Lighting
- 6 Gallon Quick Recovery Water Heater
- Showermi\$er™ Fresh Water Saver
- Porcelain Foot-Flush Toilet
- 30K BTU Furnace
- Medicine Cabinet with LED Backlight
- Bathroom Skylight and 12V Fan
- Smoke/CO/LP Detectors
- Fire Extinguisher

## OPTIONS

- MANDATORY: Electric Fireplace (n/a: 20FB)
- MANDATORY: CUB Lane Change Assist (LCA) Safety Feature
- MANDATORY: Aluminum Gear Box (LP/Battery Storage and Tool Box)
- Theater Seating (in place of Tri-fold Hide-a-Bed Sofa: 28BH/28MBH, STD. on 26RB/26MRB, 29RS/29MRS)
- Tri-fold Hide-a-Bed Sofa (in place of Theater Seating: 26RB/26MRB, STD. on 28BH/28MBH)
- Theater Sofa (in place of U-Dinette: 24BH/24MBH)
- Free-standing Table and Chairs (in place of Legless Dinette: 26RB/26MRB, 28BH/28MBH, STD. on 29RS/29MRS)
- 2nd DQ (Ducted/Quiet) Soft-Start 15k BTU AC (28BH/28MBH, 29RS/29MRS ONLY)
- Truma AquaGo® Instant Water Heater (in place of Gas/Electric Water Heater)
- Outside Kitchen with Griddle (Connects To LP Quick Connect), 120V Mini-Fridge, and Powder-coated Steel Countertop (n/a 29RS/29MRS)
- Wireless Side/Rear Observation Camera System with 12V Monitor
- Off-Grid Solar Package: Dual Go Power!® 200W Rooftop Solar Panels (400W total), 2000W Pure Sine Wave Inverter, 50 Amp Victron® MPPT Solar Controller
- 270Ah Battle Born® Lithium-ion (LiFePO4) "Gamechanger" 12V Battery



## NOTES

---



---



---



---



---

